



ONE PLUS ∞

A DIFFERENT WORLD OF HARDWARE



Interior Hardware Solution

2024
Product Catalogue

Founded in 2020, One Plus Hardware Fittings is a dynamic and innovative startup committed to delivering high-quality furniture hardware solutions. In a short span of time, we've rapidly expanded our product portfolio to include over 60 premium items, catering to the diverse needs of our customers across the country.

Our range features essential products such as Slim Tandem Box, Aluminium Basket, Pull-Out Basket, Wicker Basket, Telescopic Channels, Handle, Hinges, Screw, Washer, Lock, Runner, Gas Pump, Magnet, and more. Each product is designed with precision and crafted using the finest materials to ensure durability, functionality, and aesthetic appeal.

At One Plus Hardware Fittings, our mission is to become a trusted name in the furniture hardware industry by consistently offering products that meet the highest standards of quality and innovation. We are dedicated to expanding our presence, forging strong partnerships, and continuously evolving to meet the ever-changing demands of the market.

Whether you're a manufacturer, dealer, or DIY enthusiast, One Plus Hardware Fittings is here to provide you with the tools and support you need to bring your projects to life. **Join us as we continue to grow and set new benchmarks in the world of furniture hardware.**



INDEX

01

KITCHEN ACCESSORIES

Slim Tandem Box
Tandem Accessories
Pull-Out Basket
Perforated Sheet Basket
SS Wire Basket
Folding PRP Basket
Aluminium Basket
Plastic Wicker Basket
Swing Corner
Rolling Shutter
Pantry Unit
Universal Magic Corner

05

FURNITURE HARDWARE ITEMS

Telescopic Channel
Handle
Profile Handel
Concealed Handel
Knobe
Hinges
Auto Hinges
Screw
Handel Pin / Washer
Gas Spring
Track Runner
Hydraulic Bed Frame & Fitting
MS Folding Bracket
Folding Dining Table Bracket
G-Profile & T-Profile

11

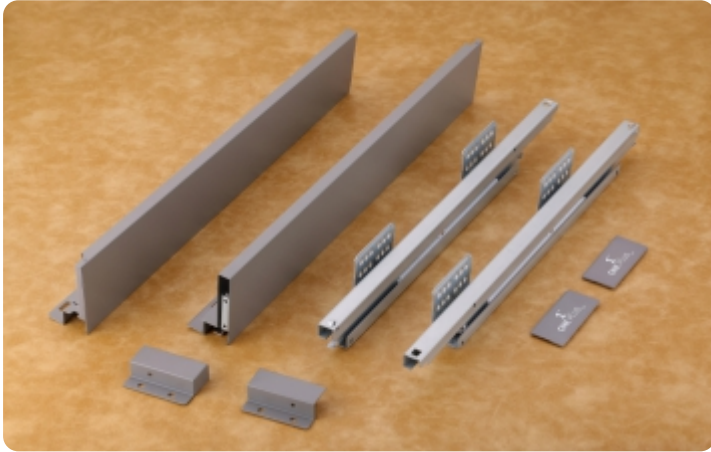
FURNITURE HARDWARE ACCESSORIES

Adhesive, Wall Plug, Lock, Mirror
Button, Legs, Stopper, Aldrop,
PVC Patti, Door Catcher Magnet,
PVC Ventilation Grill

16

OUR NETWORK





Slim Tandem Box

Length : 450mm/500mm/550mm
 Height : 84mm/116mm/164mm
 Synchronize : Soft Close
 Finish : Iron Grey
 Weight Capacity : 35 to 40 kg



TANDEM ACCESSORIES

SS Fixer Stand

Material: SS
 Height: 4" | 6" | 8"
 Description: Cup Stand, Dish Stand, Thali Stand



PVC Cutlery Tray

Width: 15" to 24"
 Depth: 18.50" & 20.50"
 Colour: Grey

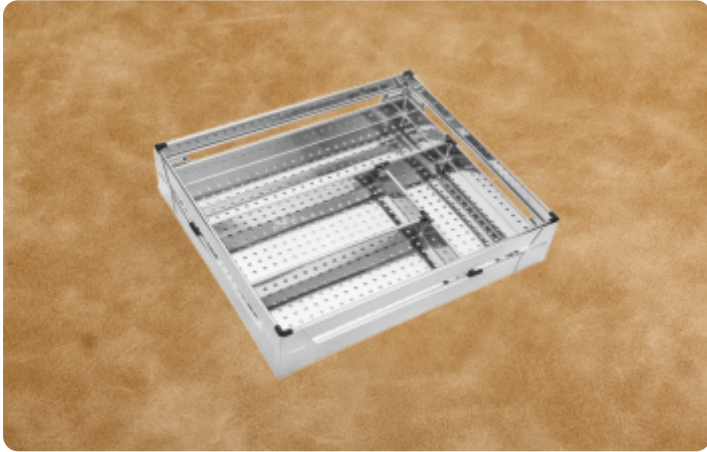


Pull-Out Baskets

Width : 6" | 8" | 10"
 Height : 17" & 21"
 Depth : 20"
 Material : Full PRP SS
 Set : 2 Shelf and 3 Shelf

Aluminum 5-6mm Wire SS PRP Tandem Pullout





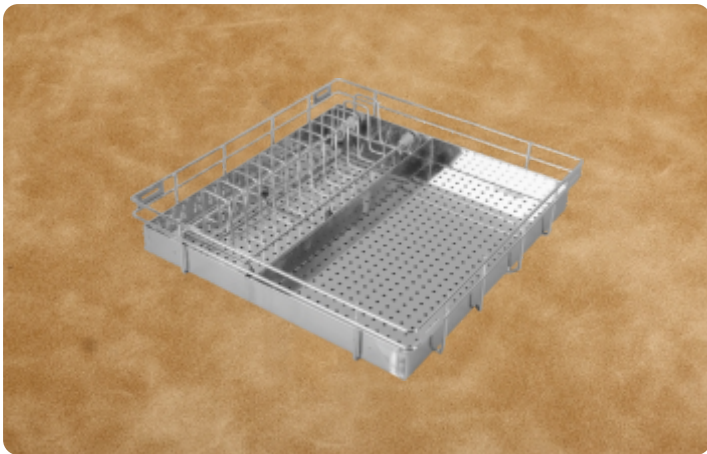
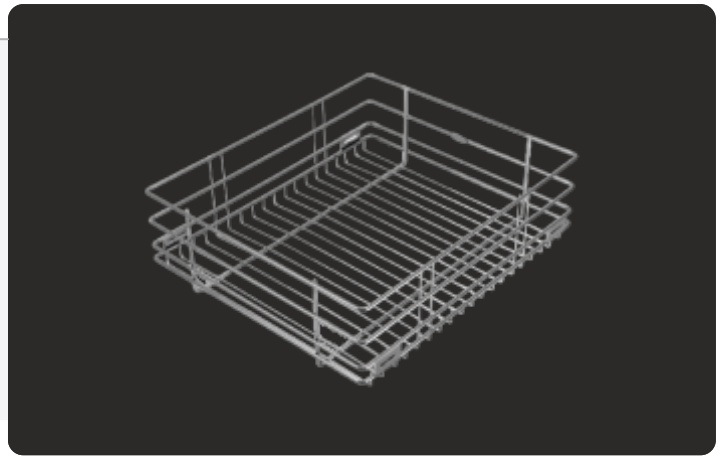
Perforated Sheet Basket

Height : 4" | 6" | 8"
 Width : 15" | 17" | 19" | 21"
 Depth : 20"
 Material : SS 202 Sheet
 Finish : Chrome
 Set : 1 set = 5 pcs
 (Cup-Rakabi, Thali, Cutlery, 4" & 6" Plain)



SS Wire Basket

Height : 4" | 6" | 8"
 Width : 15" | 17" | 19" | 21"
 Depth : 20"
 Material : SS 202 Wire
 Finish : Chrome
 Set : 1 set = 5 pcs
 (Cup-Rakabi, Thali, Cutlery, 4" & 6" Plain)



Folding PRP Basket

Height : 4" | 6" | 8"
 Width : 15" | 17" | 19" | 21"
 Depth : 20"
 Material : SS 202 Sheet
 Finish : Chrome
 Set : 1 set = 5 pcs
 (Cup-Rakabi, Thali, Cutlery, 4" & 6" Plain)



Aluminium Basket

Height : 4" | 6" | 8"
 Width : 15" | 17" | 19" | 21"
 Depth : 20"
 Finish : Grey
 Material : Aluminum Coated
 Set : 1 set = 5 pcs
 (Cup-Rakabi, Thali, Cutlery, 4" & 6" Plain)





Plastic Wicker Basket
 Finish : Wooden
 Width : 18" & 24"
 Height : 4" | 6" | 8"
 Accessories : Wooden Frame

Swing Corner Pull-Out
 : Double Rack
 Colour : White & Grey
 WxDxH(mm) : 860x500x600
 Slide : Right & Left



Super Quality...



Perfect Choice...

Rolling Shutter

Colour : White & Grey & Black
 Width : 18" / 24"
 Height : 52"
 Material : PVC



Satin Pantry Unit

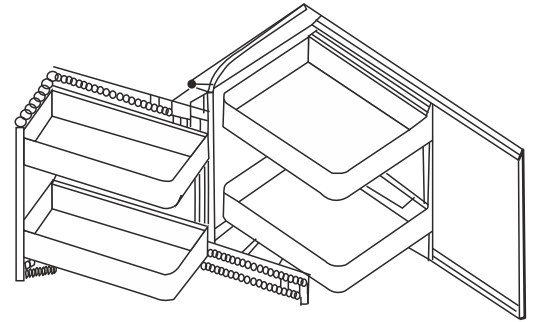
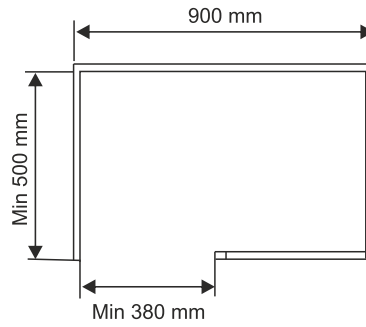
Colour : Grey
 Shelf : 6+6 (12)
 Height : 72"
 Size : 450mm & 600mm



Universal Magic Corner

Inner Basket Size : 2 Baskets 517mm Height
 Width : 475mm
 Depth : 372mm
 Height : 517mm

Outer Basket Size : 2 Baskets 517mm Height
 Width : 475mm
 Depth : 232mm
 Height : 517mm





SUPER
Telescopic Channel

Weight : 54gm
 Weight Capacity : 35kg
 Size : 10" | 12" | 14" | 16" | 18" | 20"
 Width : 45mm
 Material/ Finish : Iron / Black



DELUXE
Telescopic Channel

Weight : 75gm
 Weight Capacity : 45kg
 Size : 10" | 12" | 14" | 16" | 18" | 20"
 Width : 45mm
 Material/ Finish : Iron / Black

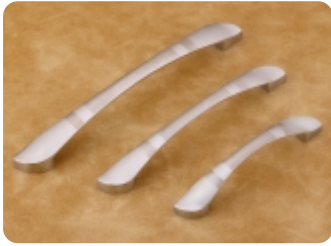


SOFT CLOSE
Telescopic Channel

Size : 10" | 12" | 14" | 16" | 18" | 20"
 Width : 45mm
 Material : Iron
 Finish : Black



Style + Quality



Handel Model : 001 ∞
 Finish : CPTT
 Size : 4" 6" 8"
 Packing per Box : 50nos 40nos 30nos

Handel Model : 99 ∞
 Finish : CPTT
 Size : 4" 6" 8"
 Packing per Box : 50nos 40nos 30nos



Handel Model : 144 ∞
 Finish : CP
 Size : 4" 6" 8"
 Packing per Box : 50nos 40nos 30nos

Handel Model : 171 ∞
 Finish : CP & Black
 Size : 4" 6" 8"
 Packing per Box : 50nos 40nos 30nos



Handel Model : 105 ∞
 Finish : CP & Black
 Size : 4" 6" 8"
 Packing per Box : 50nos 40nos 30nos

Handel Model : Civik ∞
 Finish : CPTT
 Size : 4" 6" 8"
 Packing per Box : 50nos 40nos 30nos



Handel Model : Dolphin ∞
 Finish : CP & Black
 Size : 4" 6" 8"
 Packing per Box : 50nos 40nos 30nos

Handel Model : IMP Round ∞
 Finish : CP & Black
 Size : 4" 6" 8"
 Packing per Box : 50nos 40nos 30nos





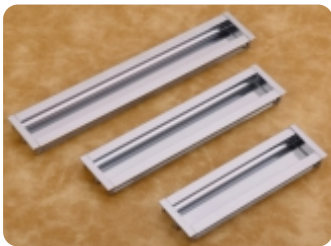
Profile Handel Model : V-3 ∞
 Finish : CP & Black
 Size : 8" - 30"
 Packing per Box : 15nos

Profile Handel Model : V-5 ∞
 Finish : CP & Black
 Size : 8" - 30"
 Packing per Box : 15nos



Profile Handel Model : H-6 ∞
 Finish : Gold, Rose Gold, Black
 Size : 8" - 36"
 Packing per Box : 15nos

Handel Model : Concealed Black ∞
 Finish : CP & Black
 Size : 6" 8" 10"
 Packing per Box : 20nos 20nos 20nos



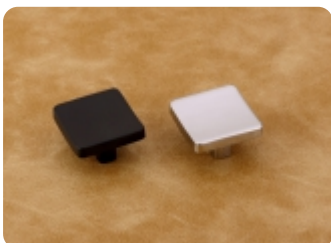
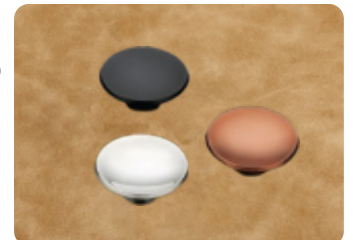
Handel Model : Concealed CP ∞
 Finish : CP & Black
 Size : 6" 8" 10"
 Packing per Box : 20nos 20nos 20nos

Handel Model : H-12 ∞
 Finish : Black
 Size : 2" 4" 6" 8" 10"
 Packing per Box : 15nos

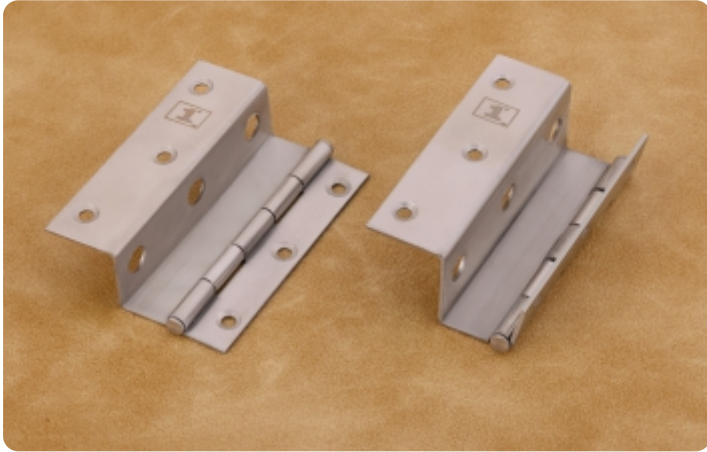


Handel Model : V Knob ∞
 Finish : Black, Rose Gold
 Size : Common
 Packing per Box : 50nos

Handel Model : Round Knob ∞
 Finish : Silver, Black, Rose Gold
 Size : Common
 Packing per Box : 50nos

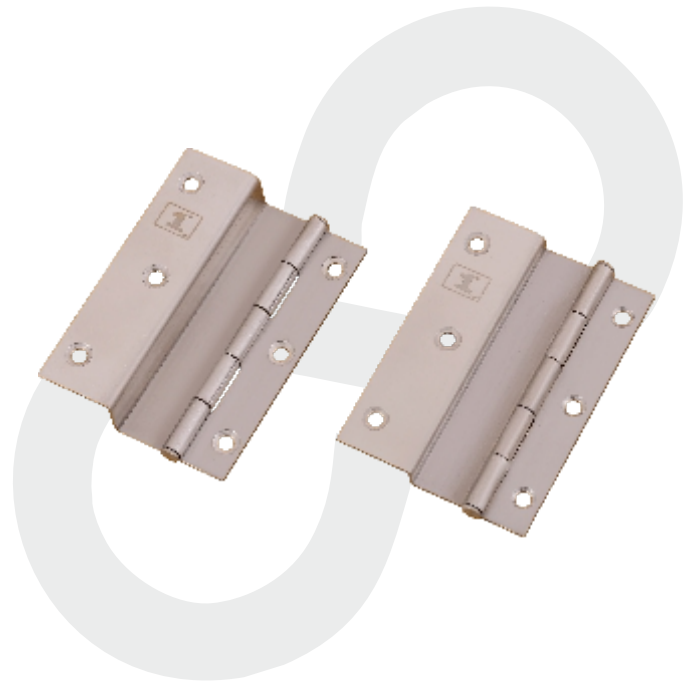


Handel Model : Square Knob ∞
 Finish : CP, Black
 Size : Common
 Packing per Box : 50nos

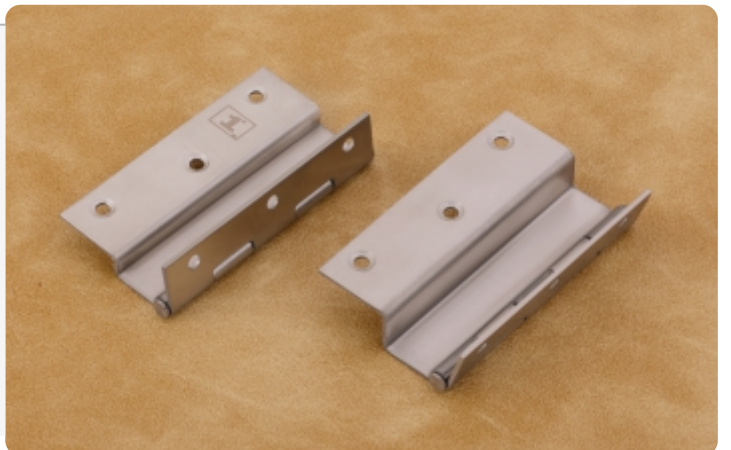


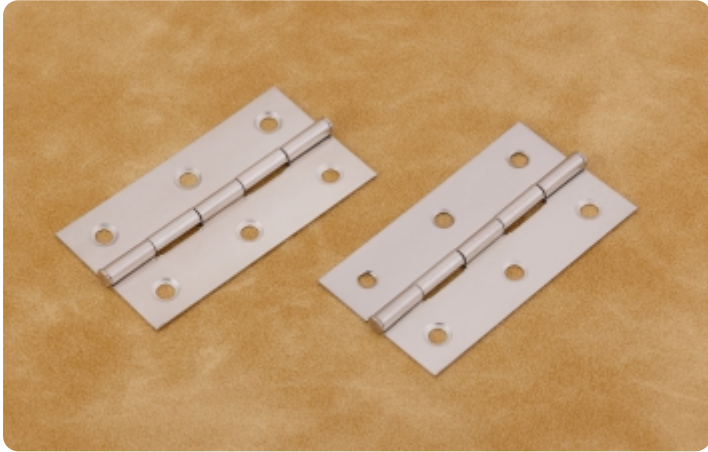
Hinges

Thickness : 1.15mm & 1.45mm
 Material / Finish : SS / Matt
 Size : 75X10X 6-12-19-25 mm
 : 75X12X 6-12-19-25 mm
 Packing Per Box : 40nos



L - Lock Hinges : The door will open up to 90°
 Thickness : 1.45mm
 Material / Finish : SS / Matt
 Size : 75X10X 6-12-19-25 mm
 : 75X12X 6-12-19-25 mm
 Packing Per Box : 40nos





Door Hinges

Material : Stainless Steel - SS
 Finish : Matt
 Size : 3x19x19mm
 Packing Per Box : 100nos



Auto Hinges

Material : MS / SS
 Size : 0° Crank & 8° Crank
 Weight : 180gm
 Packing Per Box : 50nos



Screw

Colour : Black & Blue
 Material : Iron
 Size : 19x6 | 25x6 | 38x8 | 50x8 |
 60x8 | 75x8 | 75x10
 Packing Per Box : 1kg



Handle Pin / Washer

Item : With or without Washer
 Material : MS
 Size : 22mm | 25mm
 Packing Per Box : 1kg





Gas Spring

Weight Capacity : 5kg, 10kg, 15kg

Finish : White & Sliver

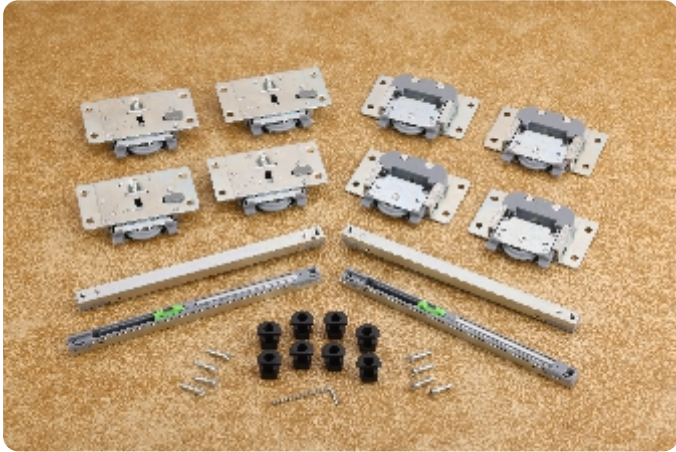
Packing Per Box : 50 Set

Material : Stainless Steel - SS

Size : 9"



Strength ∞ Durability



Sky Track Runner

Material : Metal Body with Metal Damper
 Door Weight Capacity : 60kg
 Damper : Small & Big
 Screw Type : Cross

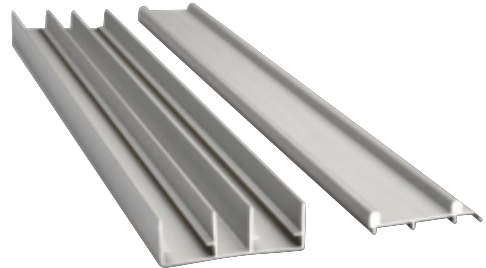


Double Track Runner

Material : Metal Nylon Wheel Integral Bearing
 Door Weight Capacity : 60kg

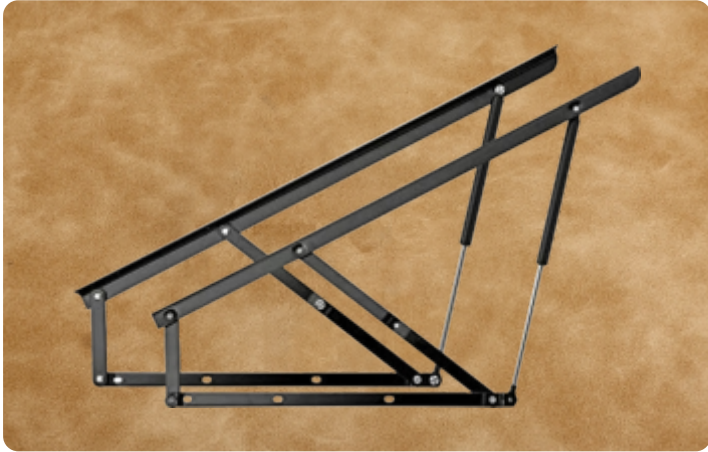


Sky Track • Size : 6.5' | 7' | 8' | 10'



Double Track • Size : 6.5' | 7' | 8' | 10'





Hydraulic Bed Frame & Fitting

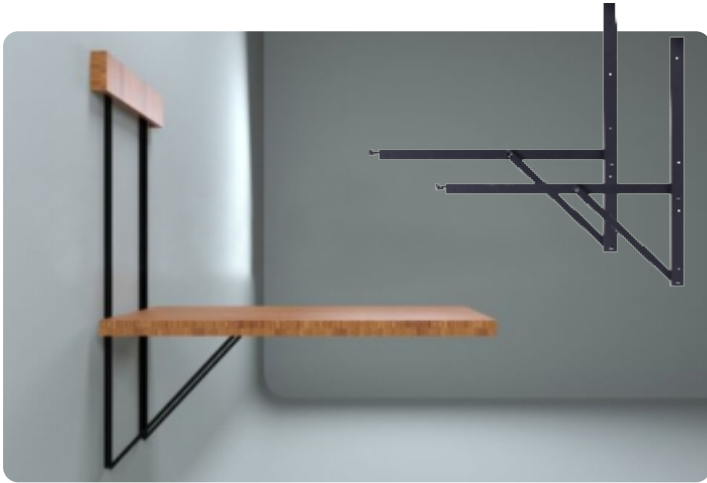
Material : MS
 Size / Thickness : 5ft | 5mm
 Weight : 9.3kg to 9.5kg
 Packing Per Box : 1set
 Colour : Black Coated
 Pump Capacity : 100, 125, 150kg



MS Folding Bracket

Size (Inch) : 12 16 20 24
 Weight(Kg) : 1.5 2.0 2.5 3.0
 Packing per box : 25 20 15 12
 Colour : Black Coated
 Thickness : 1.2mm





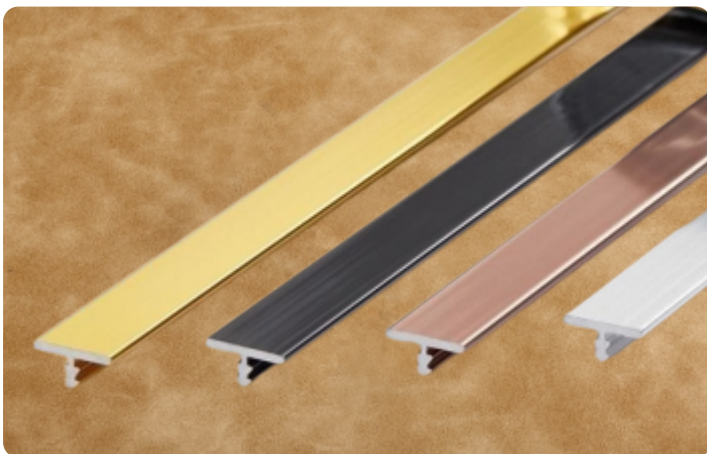
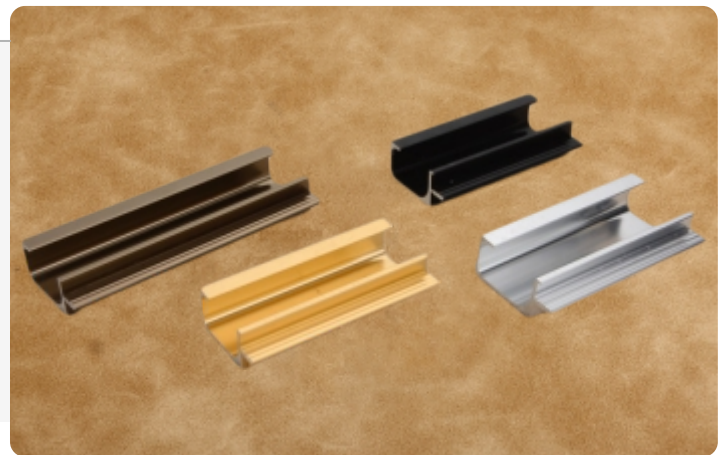
Folding Dining Table Bracket

Material : MS
 Size : 3ft | 5ft
 Weight : 4.5kg | 8.0kg
 Packing Per Box : 8 set | 5 set
 Colour : Black Coated



G-Profile

Material : Aluminium
 Colour : Black, Silver, Gold, Rose Gold
 Size : 10ft
 Weight : 1 kg to 1.2 kg
 Packing Per Box : 10pcs



T-Patti (Tile Frame)

Material : Aluminium
 Colour : Black, Silver, Gold, Rose Gold
 Width : 8mm | 12mm
 Size : 10ft





Adhesive Super Gel

- Fast Bonding
- Precision Application
- Durable Bond
- Transparent Finish



Wall Plug

- Size: 35x8
- Prevents Wall Damage
- Easy Installation
- Secure Anchoring



Aluminum Multi Lock

- Simple Key
- Secure Multi-Point Locking
- Weather-Resistant
- High Durability & Lightweight



Sumo Ultra Lock

- Computer Key Enhanced Security
- Durable Construction
- Corrosion-Resistant
- Easy Operation



Cupboard Lock

- Variety of Styles
- Durability
- Corrosion-Resistant
- Easy Operation



Push Lock

- Easy Operation
- Sleek Design
- Space-Saving
- Durable



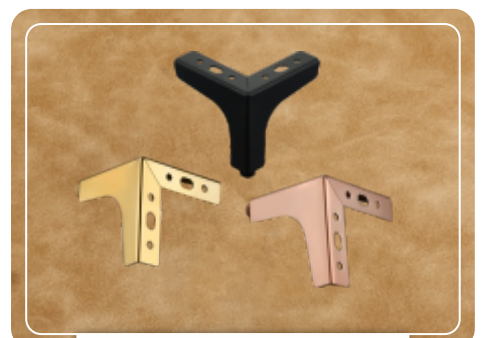
Mirror Button

- Secure Fastening
- Aesthetic Appeal
- Corrosion-Resistant
- Easy Installation



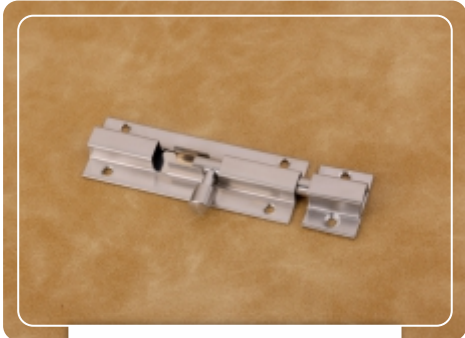
Round Legs

- Available in Size 3" 4"
- Stylish Appearance
- Stable Support
- Easy to Clean



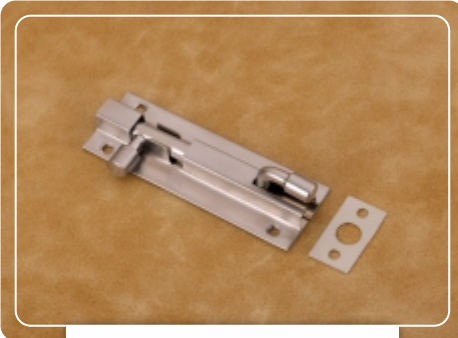
Y - Legs

- Available in Size 3" 4"
- Stylish Appearance
- Stable Support
- Easy to Clean



∞
Stopper

- Prevents Damage
- Noise Reduction
- Simple Installation
- Durable



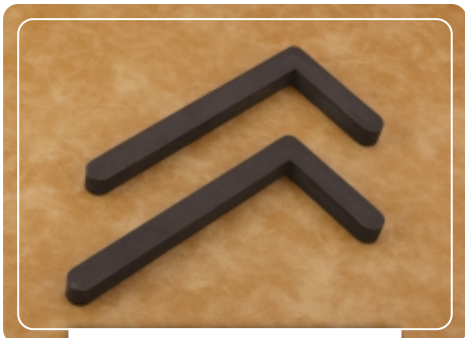
∞
L Stopper

- Secure Positioning
- Space-Saving Design
- Durable Material
- Easy to Install



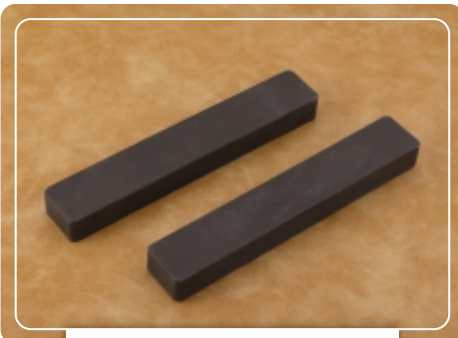
∞
PVC Aldrop

- Lightweight
- Low Maintenance
- Durable
- Affordable



∞
L PVC Corner

- Best Screw Holding Capacity
- Termite Proof & Lightweight
- **Used to Hold PVC Door Fitting**



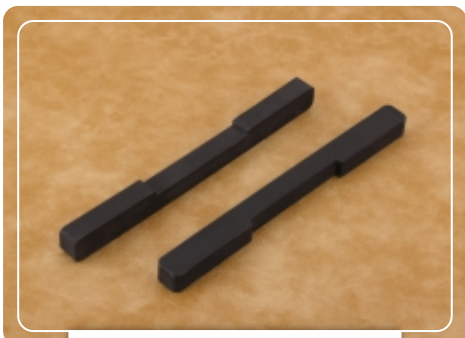
∞
PVC Pipe Patti

- Best Screw Holding Capacity
- Termite Proof & Lightweight
- **Used to Hold Screw in PVC Pipe**



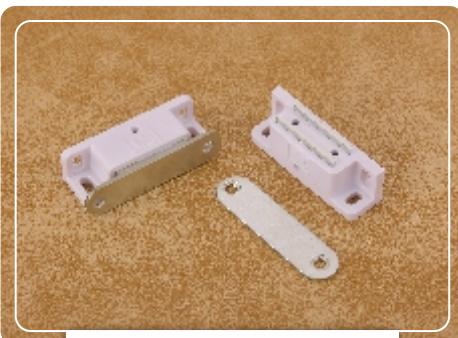
∞
PVC Sheet Patti

- Best Screw Holding Capacity
- Termite Proof & Lightweight
- **Used to Hold Screw in PVC Sheet**



∞
PVC Hinges Patti

- Best Screw Holding Capacity
- Termite Proof & Lightweight
- **Used to Hold Hinges in PVC Sheet**



∞
Door Catcher Magner

- Model : Number 1
- Strong Magnetic Hold
- Noiseless & Low Maintenance
- Space-Efficient



∞
PVC Ventilation Grill

- Rust-Proof
- Lightweight
- Low Maintenance
- Durable & Cost-Effective



At One Plus Hardware Fittings, we're on a journey to build a robust network across the country. Currently, we are focused on expanding our reach, aiming to partner with a growing number of dealers and hardware shops nationwide. As we continue to innovate, our goal is to establish exclusive product display centers in major cities across India. These centers will showcase our latest offerings, serve as hubs for product training, and provide top-notch after-sales support for installation. We're committed to reaching new heights and making One Plus Hardware Fittings a trusted name in every corner of the country.



ONE PLUS

A DIFFERENT WORLD OF HARDWARE



ONE PLUS

A DIFFERENT WORLD OF HARDWARE

Mfg & Marketed by

Oneplus International
Ahmedabad, Gujarat - INDIA.



www.oneplushardware.com

